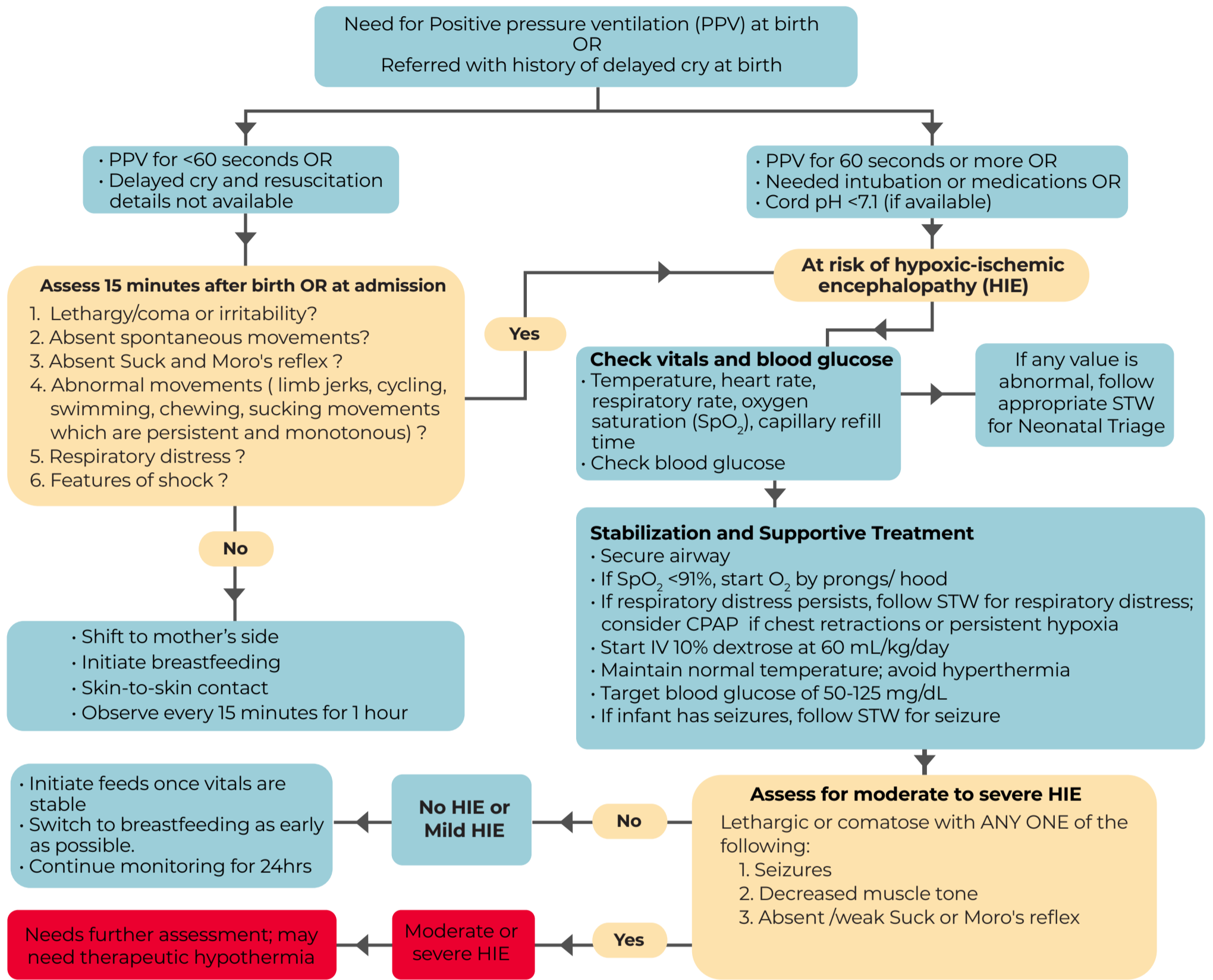


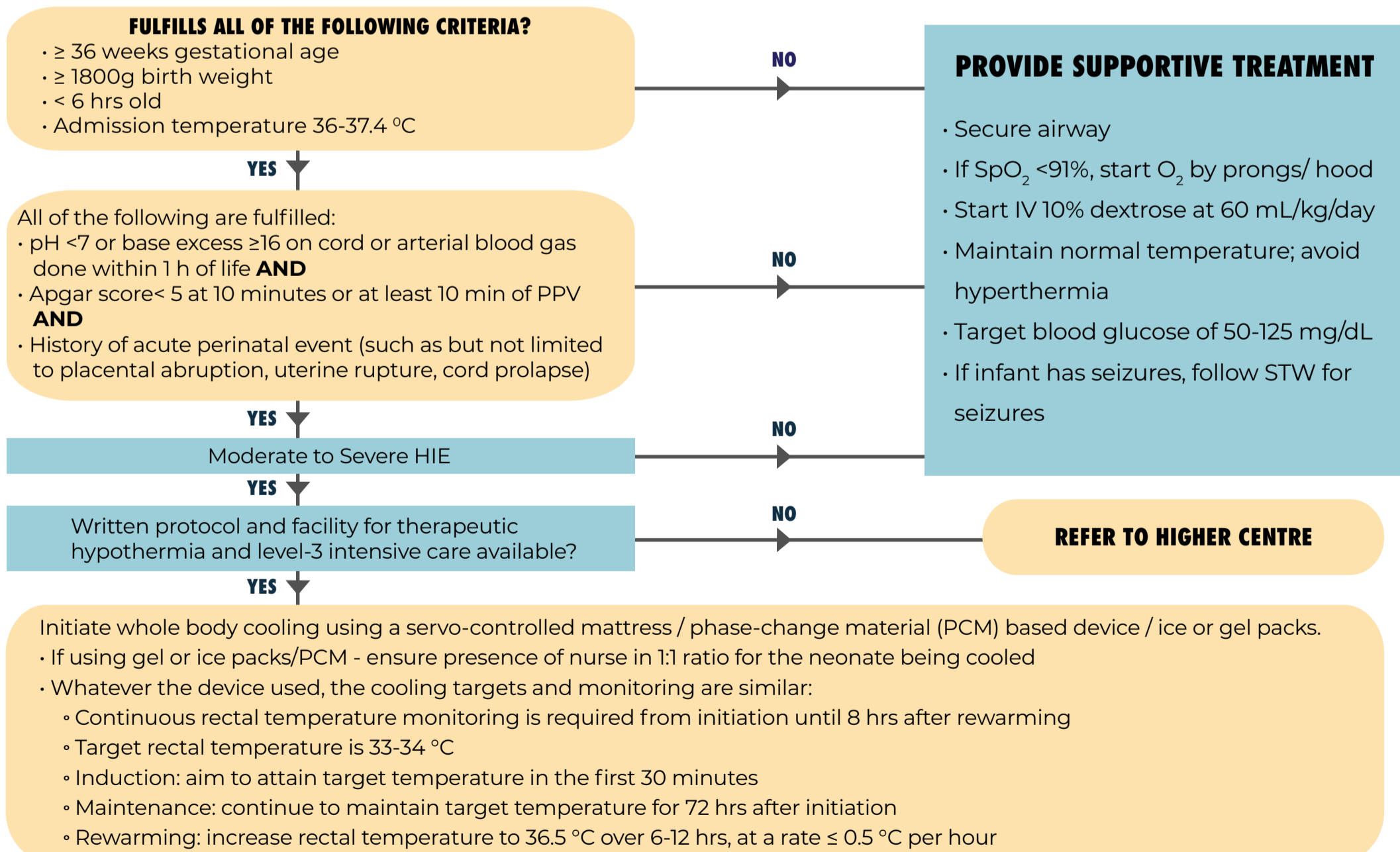


Standard Treatment Workflow (STW) POST-ASPHYXIAL MANAGEMENT OF NEONATES ICD-10-P21.0

IMMEDIATE MANAGEMENT OF AN ASPHYXIATED NEONATE



NEONATE WITH MODERATE OR SEVERE HYPOXIC-ISCHEMIC ENCEPHALOPATHY



ABBREVIATIONS

BE: Base excess
CBC: Complete blood count
CRP: C reactive protein

CSF: Cerebrospinal fluid
HIE: Hypoxic-ischemic encephalopathy
NICU: Neonatal intensive care unit

PPV: Positive pressure ventilation
SNCU: Special newborn care unit

REFERENCES

1. NNF Working Group. Position Statement and Guidelines for Use of Therapeutic Hypothermia to treat Neonatal Hypoxic Ischemic Encephalopathy in India. New Delhi: National Neonatology Forum, India; 2021 Oct.
2. Sarnat HB, Sarnat MS. Neonatal Encephalopathy Following Fetal Distress: A Clinical and Electroencephalographic Study. Arch Neurol-chicago. 1976; 33(10):696-705.
3. Abate BB, Bimerew M, Gebremichael B, Kassie AM, Kassaw M, Gebremeskel T, et al. Effects of therapeutic hypothermia on death among asphyxiated neonates with hypoxic-ischemic encephalopathy: A systematic review and meta-analysis of randomized control trials. Plos One. 2021; 16(2):e0247229.

FREQUENT MULTI-SYSTEM MONITORING IS A MUST