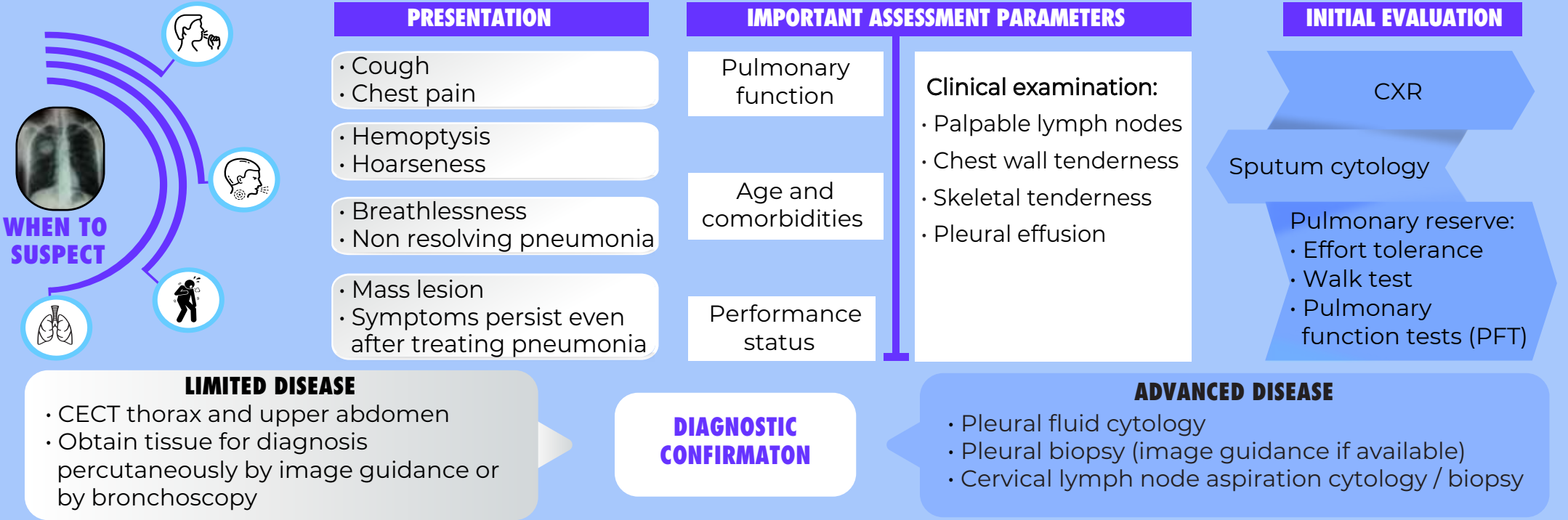


Standard Treatment Workflow (STW) LUNG CANCER ICD-10-C34.90

Evaluation and management by multidisciplinary team (MDT) of oncology experts



All lung shadows are not tuberculosis ! Obtain diagnostic investigations before starting empirical ATT !

PATHOLOGY ASSESSMENT

- Biopsy/ cell block/ smear
- Histopathology**
adenocarcinoma, squamous carcinoma, poorly differentiated carcinoma, small cell carcinoma
- Immunohistochemistry**
TTF 1, p40, synaptophysin/ chromogranin
- Preserve tissue for molecular analysis**
Molecular tests for adenocarcinoma: EGFR, ALK, ROS-1

SMALL CELL LUNG CARCINOMA

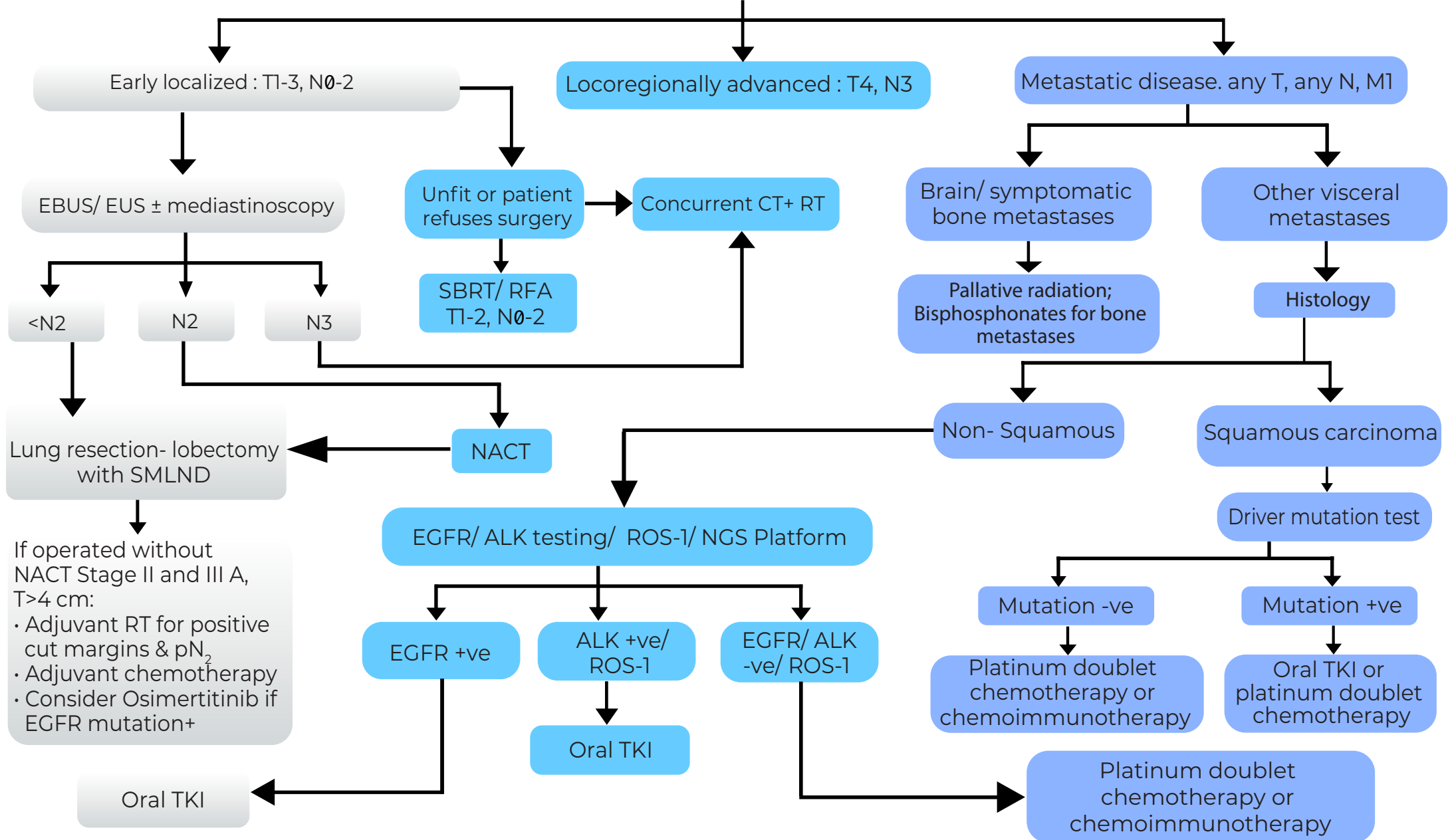
- Do CECT thorax and abdomen**
- Non metastatic disease** T1-4, N0-3, M0
 - Metastatic work up: PET CT & MRI brain
 - Consider surgery for T1-2, N0
 - Concurrent CT + RT
- Metastatic disease** Any T, any N, M1
 - Prophylactic cranial irradiation
 - Symptomatic & supportive care
 - Palliative chemotherapy carboplatin + etoposide

NON SMALL CELL LUNG CARCINOMA

- Do CECT thorax and abdomen**
- Non metastatic disease:** T1-4, N0-3
 - Metastatic work up: PET CT and MRI brain
- Metastatic disease:** Any T, any N, M1
 - Symptomatic & supportive care
 - Refer to oncology centre
 - Palliative chemotherapy (platinum doublet in fit patients, single agent chemotherapy for PS 2)
 - Oral TKI if target mutation detected
 - Immunotherapy may be an option in some patients

MANAGEMENT OF NSCLC

METASTATIC WORKUP* PET-CT SCAN AND MRI BRAIN



AVAILABLE TREATMENT OPTIONS

- Chemotherapy doublet:
 - Carboplatin or cisplatin with pemetrexed or paclitaxel or gemcitabine or etoposide
- EGFR mutation positive: gefitinib, afatinib, osimertinib, erlotinib, dacomitinib
- Immune checkpoint inhibitors: nivolumab, atezolizumab, pembrolizumab, ipilimumab

PALLIATIVE CARE

- Radiotherapy
- Pain management
 - Opioids: morphine, tramadol, oxycodone
 - Paracetamol, nonsteroidal anti-inflammatory drugs
- Cough suppressants
- Treatment of chronic obstructive pulmonary disease
- Treatment of anemia, anorexia, electrolyte abnormalities

ABBREVIATIONS

ALK: Anaplastic lymphoma kinase	EBUS: Endobronchial ultrasound	PFT: Pulmonary function test	SMLND: Systematic lymph node dissection
ATT: Anti tubercular therapy	EGFR: Epidermal growth factor receptor	pN2: Pathological node	T, N, M: Tumour (T), Nodes (N), and Metastases (M)
CECT: Contrast-enhanced computed tomography	NACT: Neoadjuvant chemotherapy	RFA: Radiofrequency ablation	TKI: Tyrosine kinase inhibitors
COPD: Chronic obstructive pulmonary disease	NGS: Next generation sequencing	ROS: Ros proto-oncogene 1	
CT: Computed tomography	NSCLC: Non-small cell lung cancer	RT: Radiotherapy	
CXR: Chest X Ray	PET CT: Positron emission tomography	SBRT: Stereotactic body radiotherapy	

KEEP A HIGH THRESHOLD FOR INVASIVE PROCEDURES.