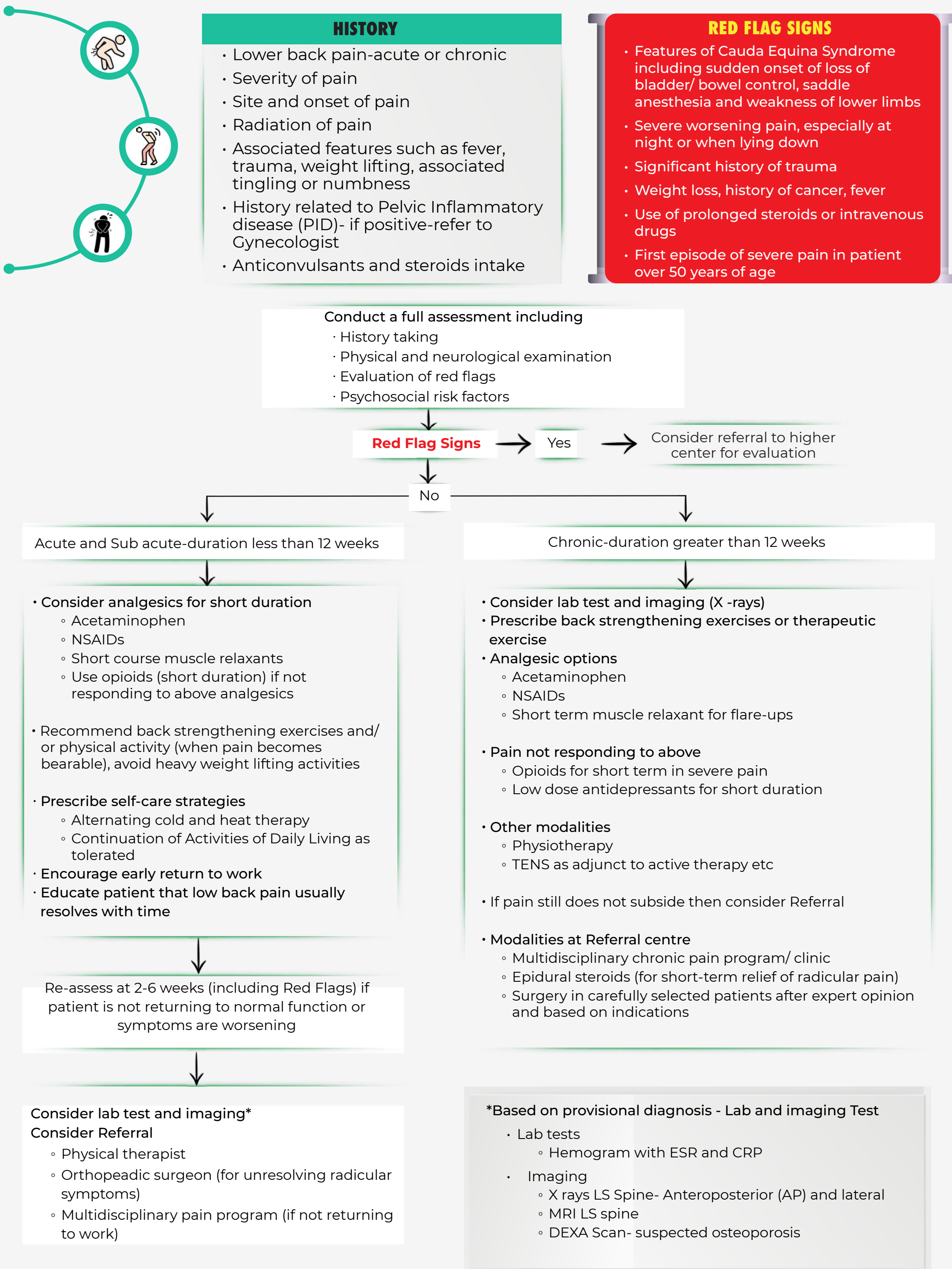




Standard Treatment Workflow (STW) LOWER BACK PAIN ICD-10-M54. 2



ABBREVIATIONS

CRP: C-reactive Protein

DEXA: Dual-energy X-ray Absorptiometry

LS: Lumbo-Sacral

ESR: Erythrocyte Sedimentation Rate

MRI: Magnetic Resonance Imaging

NSAIDs: Non-Steroidal Anti-inflammatory Drugs

PID: Pelvic Inflammatory Disease

TENS: Transcutaneous Electrical Nerve Stimulation

REFERENCES

- Oliveira CB, Maher CG, Pinto RZ, Traeger AC, Lin CC, Chenot JF, van Tulder M, Koes BW. Clinical practice guidelines for the management of non-specific low back pain in primary care: an updated overview. Eur Spine J. 2018 Nov;27(11):2791-2803. doi: 10.1007/s00586-018-5673-2. Epub 2018 Jul 3. PMID: 29971708.
- Arnau JM, Vallano A, Lopez A, Pellisé F, Delgado MJ, Prat N. A critical review of guidelines for low back pain treatment. Eur Spine J. 2006 May;15(5):543-53. doi: 10.1007/s00586-005-1027-y. Epub 2005 Oct 11. PMID: 16217664; PMCID: PMC3489347.
- Verhagen AP, Downie A, Popal N, Maher C, Koes BW. Red flags presented in current low back pain guidelines: a review. Eur Spine J. 2016 Sep;25(9):2788-802. doi: 10.1007/s00586-016-4684-0. Epub 2016 Jul 4. PMID: 27376890.
- Koes BW, van Tulder M, Lin CW, Macedo LG, McAuley J, Maher C. An updated overview of clinical guidelines for the management of non-specific low back pain in primary care. Eur Spine J. 2010 Dec;19(12):2075-94. doi: 10.1007/s00586-010-1502-y. Epub 2010 Jul 3. PMID: 20602122; PMCID: PMC2997201.
- Ladeira CE. Evidence based practice guidelines for management of low back pain: physical therapy implications. Rev Bras Fisioter. 2011 May-Jun;15(3):190-9. doi: 10.1590/s1413-35552011000300004. PMID: 21829982.
- Dagenais S, Tricco AC, Haldeman S. Synthesis of recommendations for the assessment and management of low back pain from recent clinical practice guidelines. Spine J. 2010 Jun;10(6):514-29. doi: 10.1016/j.spinee.2010.03.032. PMID: 20494814
- Mirovsky Y. [Guidelines for the prevention of low back pain]. Harefuah. 2007 Apr;146(4):272-3, 318. Hebrew. PMID: 17476933.
- Murphy AY, van Teijlingen ER, Gobbi MO. Inconsistent grading of evidence across countries: a review of low back pain guidelines. J Manipulative Physiol Ther. 2006 Sep;29(7):576-81, 581.e1-2. doi: 10.1016/j.jmpt.2006.07.005. PMID: 16949948.

KEEP A HIGH THRESHOLD FOR INVASIVE PROCEDURES